

Known Past Regional Projects

6/18/02

[Click here to start](#)

Table of Contents

Author: Florencio I. Utreras

[PPT Slide](#)

Email: caesar@dante.org.uk

[The Latin America R&E Backbone](#)

Home Page: www.dante.net/caesar

[Known Past Regional Projects](#)

[The "Pacto Andino" Network](#)

[RedHucyt: Central America and Caribbean](#)

[Argentina-Chile Connection](#)

[South American Regional Backbone](#)

[Southern Cone Network](#)

[Integrating North and South Latin America](#)

[Infrastructure](#)

[Cable Map in LA&C](#)

[Cables in Central America](#)

[Some Issues](#)



Building Regional Networks in Latin America



Slide 1 of 13

The Latin America R&E Backbone



Slide 2 of 13



Known Past Regional Projects



Slide 3 of 13

The "Pacto Andino" Network



- Active Planning during 1996
- No activity at present



RedHucyt: Central America and Caribbean

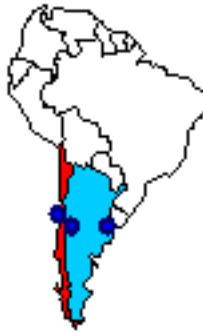


- Supported by OAS up to 1998
- Currently Inactive



Slide 5 of 13

Argentina-Chile Connection



- Supported by Fundaciones Andes & Antorchas up to 1997
- Currently Inactive





South American Regional Backbone



Slide 7 of 13

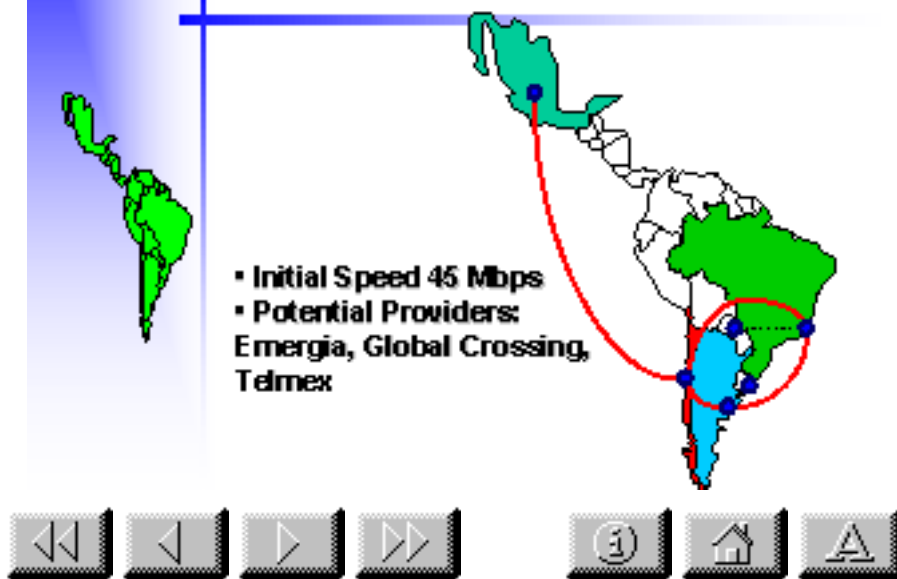
Southern Cone Network



- Initial Speed 45 Mbps
- Backbone Providers: ImpSat, Emergia, Global Crossing
- Uruguay: Wireless (10 Mbps)
- Paraguay: Embratel (2 Mbps)
- Estimated date of operation March 2003



Integrating North and South Latin America



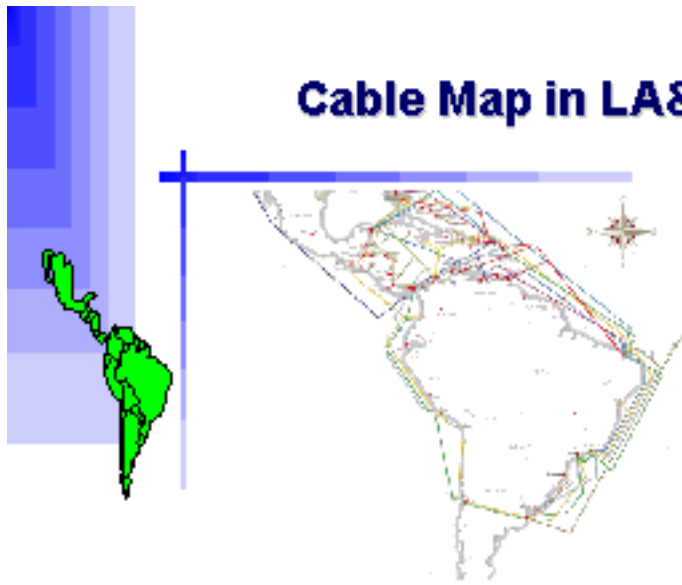


Infraestructure



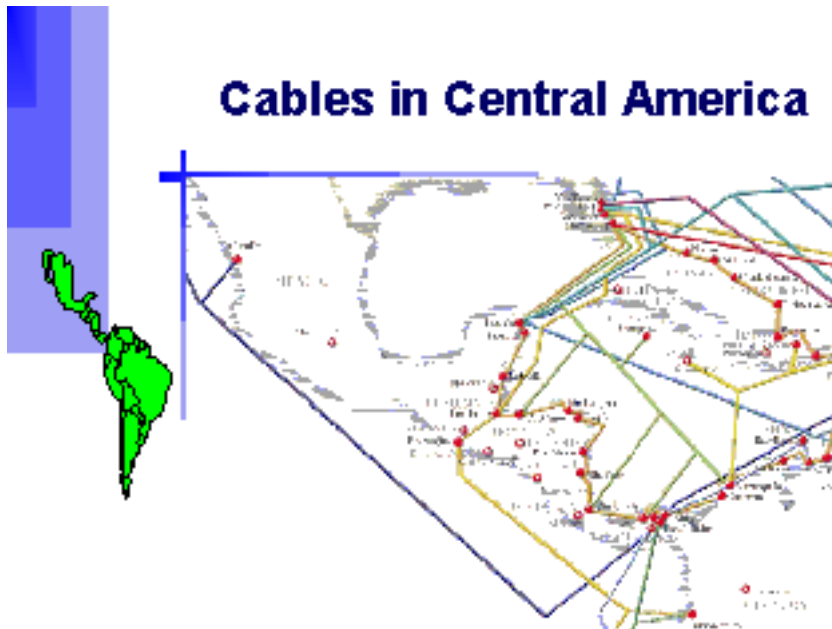
Slide 10 of 13

Cable Map in LA&C



Slide 11 of 13

Cables in Central America



Slide 12 of 13

Some Issues



- Why academic networks in LA?
- A Permanent Regional Organization
- Identify applications
- The Role of Governements
- Funding Issues
- Network Topology
- Capacity Planning
- How to organize the development of the Project.

